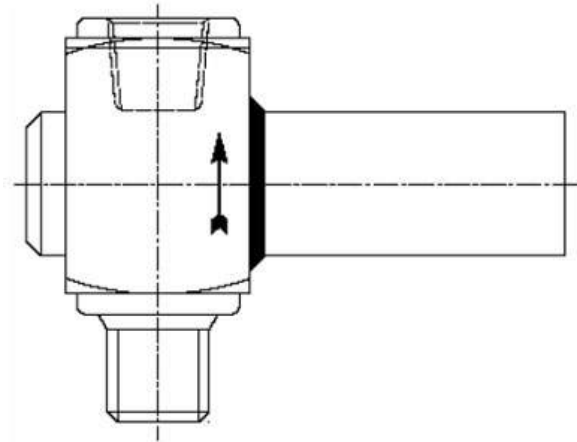


Gauge Saver AG Series



Application:

Pressure gauge repairs have shown in many cases of measuring very high (over) pressure behaviour. Not only is the normal operational pressure exceeded but it goes beyond the measuring scope of the pressure gauge. Costs for extension of the overburdened gauge, making of new gauge and repairs of the damaged instruments are the consequence of all this. The over pressure protection device is a reliable armature for avoiding such kinds of damages.

Structure and operation:

It consists of a body mainly SS316, a piston is provided on a spring screw. The spring is adjustable on the regular screw. The pressure medium enters the pressure entry cabin in the slanting canal hole, rinsing over the piston head and leaving the piston cover above the upper slanting canal hole. The small 'O' ring guarantees that no medium enters the shaft of the spring screw. As long as the pressure medium is small as the counter pressure working on the piston over spring screw, the piston remains passing through the position. As the pressure of the medium becomes higher than the counter pressure created by the spring screw, the piston moves in the direction of the spring screw and closes the big piston 'O' ring. After the fall in pressure of about 25% with setting of the concluding pressure, the piston opens again and goes through the influence of the energy, back in the original passage.

Objection-free Working

Presupposition, for a long lasting, undisturbed working is a particle free medium. Granular contamination in the medium damages the 'O' ring / gaskets, whereby during over pressure, the closing does not take place. Therefore material for the 'O' ring, the case/body of the gauge saver, piston, lock screw are chosen in accordance with the different application mediums.

Connection:

Normally 1/2" NPT M (process side) & 1/2" NPT F (instrument side)
Other thread connections can be provided as per specific needs.

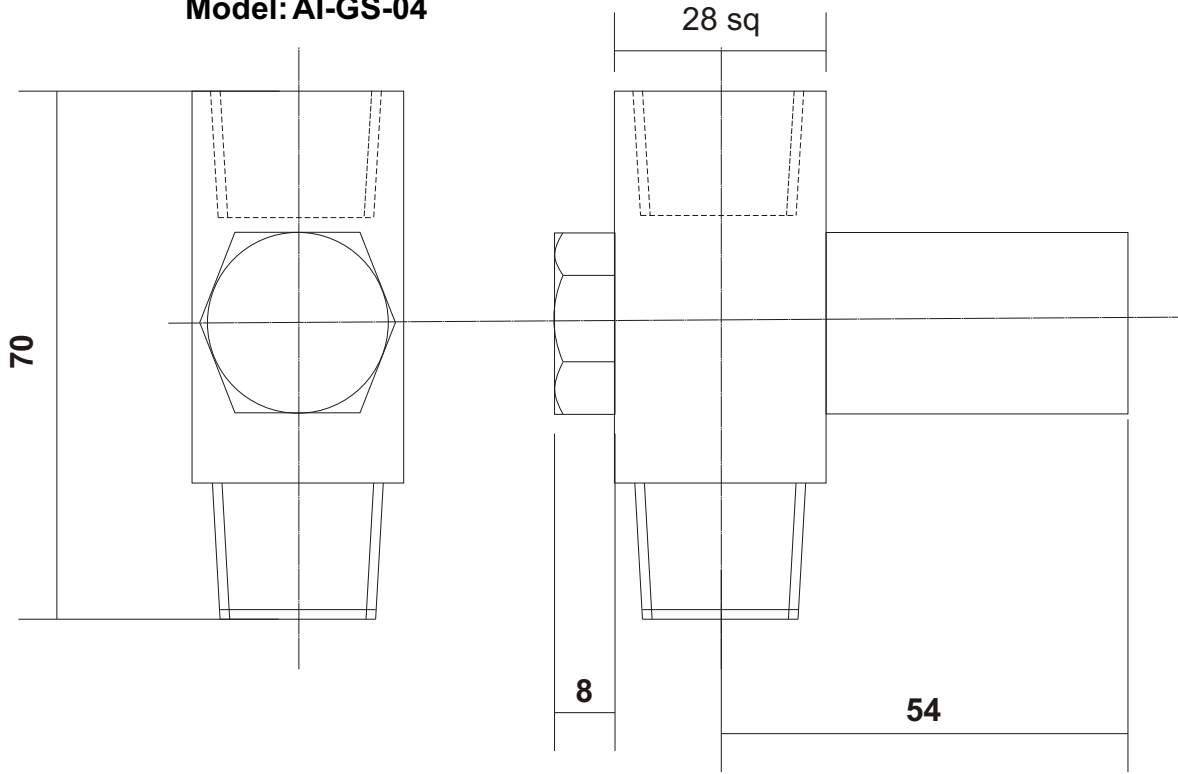
Material: Normally SS316 * Other material as per needs can be provided

Ordering Information: Material type, thread size, Set-Pressure & model no

Model: 'AG1' - for 0.1 kg/cm² to 0.5 kg/cm² - Diaphragm Operated
Model: 'AG2' - for 0.6 kg/cm² to 1.6 kg/cm² - Diaphragm Operated
Model: 'AG3' - for 2 kg/cm² to 280 kg/cm² - Piston Operated
Model: 'AG4' - for 280 kg/cm² to 600 kg/cm² - Piston Operated

Model: AI-GS-03

Model: AI-GS-04



Model: AI-GS-01

Model: AI-GS-02

